

Polyamide Glands for Ex e Applications

4 joule

LYRA



Technical Details		
Material	Body, Cap	PA 6 (Polyamide 6)
	Seal	CR (Chloroprene), Silicone
Ingress Protection Rating	IP 68 - 5 Bar, 30 min IP 66	
Operating Temperature	Seal Material	
	CR (Chloroprene)	Silicone
	Ex e/tb / Ex tb	-40°C to +80°C
Ex-i	-40°C to +70°C	-60°C to +80°C -60°C to +70°C
Equipment For	<ul style="list-style-type: none"> Gas & Dust potentially explosive atmospheres. Cable glands should be also used for intrinsically safe circuits Ex-i. These cable glands shall have a light blue colored cap. The symbol "I" will be added beside of the "BM" for order processing. 	
Suitable for use in	Group II	Gas Group IIC ZONE1/ZONE2
	Group III	Dust Group IIIC ZONE21/ZONE 22
Equipment Marking	Ex II 2GD Ex eb IIC Gb Ex tb IIIC Db	
Marking Example *	BMD BM-X... CE 0722 Ⓢ 2GD Ex eb IIC Gb Ex tb IIIC Db IP66/68 Tc-40°C +80°C IMQ 13 ATEX 010X IECEx IMQ 13.0003X	
Impact Test Result	4J	
Thread Type	<ul style="list-style-type: none"> Metric (M) ISO Pitch 1,5 Npt (N) ANSI ASME B1.20.1 PG (P) DIN 40430 Other thread types also available upon request. 	
Cable Type	Non Armoured	
Accessories	<ul style="list-style-type: none"> Lock nuts Gaskets (Washers) Dome Plugs Dust Plugs Double Seals 	
	<ul style="list-style-type: none"> We recommend the use of locknuts and gaskets to ensure IP rating for rough surfaces or through holes. Accessories must be ordered separately. 	
Remarks		
Approvals	Certificate Number	Standards
	IMQ 13 ATEX 010X	EN 60079-0:2012 + A11:2013 EN 60079-7:2015 EN 60079-31:2014
	IECEx IMQ 13.0003X	IEC 60079-0:2011 Edition:6.0 IEC 60079-31:2013 Edition:2.0 IEC 60079-7:2016 Edition: 6.0
		ISO 4892-2
	№ TC RU C-TR.AA87.B.00941	ГОСТ 31610.0-2014 ГОСТ IEC 60079-1:2013 ГОСТ IEC 60079-31:2013
	DNV 12.0051 X	ABNT NBR IEC 60079-0:2013, ABNT NBR IEC 60079-7:2008 ABNT NBR IEC 60079-31:2011
	E-14045	IEC/EN60079-0, IEC/EN60079-7, IEC/EN60079-31 IEC/EN 62444

-For more information see our webpage.

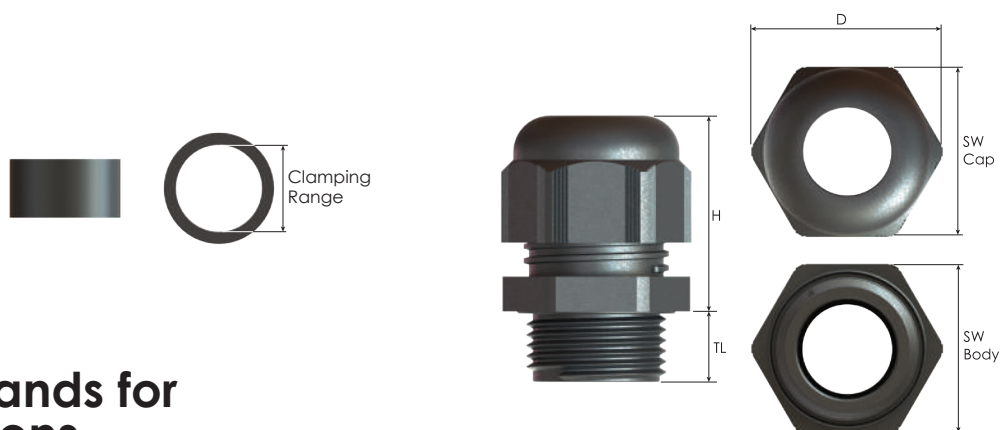
* The standard marking consists ATEX & IECEx only. Marking acc. to other standards on request.



Order Coding						
Part Number	Seal	-	Gasket (Washer)	Seal Type	Lock Nut	Sealing Plug
See table	Mandatory C Chloropren	-	Option WC Chloroprene WF Fiber WS Silicone	Option Double Seal	Option L Lock nut	Option P Dome Plug
*Part number for blue cap is BML-..						
Example						
BM-X3	C	-	WC	DS	L	P
*BML-X3						

LYRA

Polyamide Glands for Ex e Applications



Thread Type METRIC acc. to ISO 965 - 3

Outer Thread Size (Male)	Clamping Range Ø min - max mm	Outer Thread Length TL mm	Spanner Width		Outer Ø D mm	max. Height		Part Number
			SW Cap mm	SW Body mm		H mm		
M20x1,5	5,0 - 10,0	10,0	22	24	27,0	32,2		BM-SX2
	6,0 - 12,0	10,0	24	24	27,0	32,4		BM-X2
	6,0 - 12,0	15,0	24	24	27,0	32,4		BM-X2L
	10,0 - 14,0	10,0	27	27	30,9	31,9		BM-X3
	10,0 - 14,0	15,0	27	27	30,9	31,9		BM-X4
M25x1,5	10,0 - 14,0	10,0	27	27	30,9	31,9		BM-SX5
	10,0 - 14,0	15,0	27	27	30,9	31,9		BM-SX6
	11,0 - 17,0	10,0	29	29	32,5	37,7		BM-XEU25
	13,0 - 18,0	15,0	33	33	37,2	38,4		BM-X6
	13,0 - 18,0	10,0	33	33	37,2	38,4		BM-X5
M32x1,5	13,0 - 18,0	10,0	33	36	41,0	38,4		BM-SX7
	15,0 - 21,0	10,0	36	36	41,0	42,3		BM-XEU32
	18,0 - 25,0	15,0	42	42	47,1	43,3		BM-X7
M40x1,5	19,0 - 28,0	10,0	46	46	52,4	47,4		BM-XEU40
	19,0 - 28,0	15,0	46	46	52,4	47,4		BM-XEU40L
	22,0 - 32,0	18,0	53	53	59,6	52,4		BM-X8
M50x1,5	30,0 - 38,0	18,0	60	60	67,8	54,8		BM-X9
M63x1,5	34,0 - 44,0	18,0	65	65	72,4	54,9		BM-X10

Thread Type NPT acc. to ANSI B1.20.1

Outer Thread Size (Male)	Clamping Range Ø min-max mm	Outer Thread Length TL mm	Spanner Width		Outer Ø D mm	max. Height		Part Number
			SW Cap mm	SW Body mm		H mm		
NPT 1/2"	5,0 - 10,0	15	22	24	27,0	32,2		BN-SX2
	6,0 - 12,0	15	24	24	27,0	32,4		BN-X2
	10,0 - 14,0	15	27	27	30,9	31,9		BN-LX2
NPT 3/4"	13,0 - 18,0	15	33	33	37,2	38,4		BN-X3
NPT 1"	18,0 - 25,0	18	42	42	47,1	43,3		BN-X4